

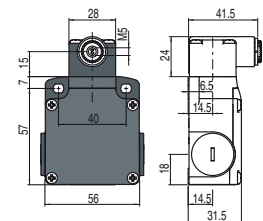
Position switches with revolving lever without actuator

All measures in the drawings are in mm

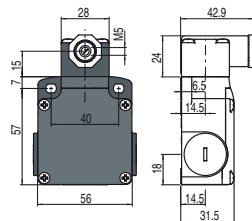
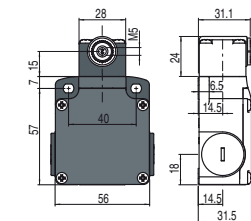
Contact type:

- R** = snap action
- L** = slow action
- LO** = slow action overlapped
- LS** = slow action shifted
- LV** = slow action shifted and spaced
- LI** = slow action independent
- LA** = slow action closer
- ⏏** = electronic PNP

Regular head



Compact head



IMPORTANT

For safety applications: join only switches and actuators marked with symbol ⊕ aside the product code.

For more information about safety applications see details on page 235.

Contact blocks

5	R	FL 538-M2 ⊕	1NO+1NC	FL 558-M2 ⊕	1NO+1NC	FL 540-M2 ⊕	1NO+1NC
6	L	FL 638-M2 ⊕	1NO+1NC	FL 658-M2 ⊕	1NO+1NC	Bistable switch S = mechanical switching point positive opening on contact 21-22 only	
7	LO	FL 738-M2 ⊕	1NO+1NC	FL 758-M2 ⊕	1NO+1NC		
9	L	FL 938-M2 ⊕	2NC	FL 958-M2 ⊕	2NC		
10	L	FL 1038-M2 ⊕	2NO	FL 1058-M2 ⊕	2NO		
11	R	FL 1138-M2 ⊕	2NC	FL 1158-M2 ⊕	2NC		
12	R	FL 1238-M2 ⊕	2NO	FL 1258-M2 ⊕	2NO		
13	LV	FL 1338-M2 ⊕	2NC	FL 1358-M2 ⊕	2NC		
14	LS	FL 1438-M2 ⊕	2NC	FL 1458-M2 ⊕	2NC		
15	LS	FL 1538-M2 ⊕	2NO	FL 1558-M2 ⊕	2NO		
16	LI	FL 1638-M2 ⊕	2NC				
18	LA	FL 1838-M2 ⊕	1NO+1NC	FL 1858-M2 ⊕	1NO+1NC		
20	L	FL 2038-M2 ⊕	1NO+2NC	FL 2058-M2 ⊕	1NO+2NC		
21	L	FL 2138-M2 ⊕	3NC	FL 2158-M2 ⊕	3NC		
22	L	FL 2238-M2 ⊕	2NO+1NC	FL 2258-M2 ⊕	2NO+1NC		
2	R	FL 238-M2 ⊕	2x(1NO-1NC)	FL 258-M2 ⊕	2x(1NO-1NC)		
E1	⏏	FL E138-M2 ⊕	1NO-1NC	FL E158-M2 ⊕	1NO-1NC		
Min. force	0.1 Nm (0.25 Nm ⊕)		0.06 Nm (0.25 Nm ⊕)		0.5 m/s with cam at 30°		
Travel diagrams	page 238 - group 4		page 238 - group 4		0.21 Nm (0.36 Nm ⊕)		

All measures in the drawings are in mm

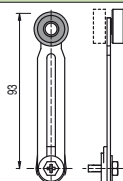
Loose actuators

All measures in the drawings are in mm

IMPORTANT: These loose actuators can be used with items of series FD, FP, FL, FC only.

Technopolymer roller Ø 20 mm	Adjustable round rod Ø 3x125 mm	Adjustable square rod 3x3x125 mm	Flexible rod with pointed end	Adjustable actuator with technopolymer roller	Adjustable fiber glass rod	
VF L31 ⊕	VF L32 ⁽³⁾	VF L33 ⁽³⁾	VF L34	VF L35 ⊕ ^{(1) (3)}	VF L36 ⁽³⁾	
Single track lyra actuator	Dual track lyra actuator	Technopolymer roller, Ø 20 mm	Technopolymer roller, Ø 20 mm	Porcelain roller	Adjustable safety actuator with technopolymer roller	Technopolymer roller, Ø 20 mm
VF L41 ⊕	VF L42 ⊕	VF L51 ⊕	VF L52 ⊕	VF L53 ⊕ ⁽²⁾	VF L56 ⊕ ⁽³⁾	VF L57 ⊕

- ⁽¹⁾ Actuator VF L35 can only be used in safety applications if adjusted to its max. length, as shown in figure beside. If you need an adjustable lever for safety applications, use the adjustable safety lever VF L56.
- ⁽²⁾ The position switch obtained by assembling switch FL •58-M2 (e.g. FL 558-M2, FL 658-M2...) with actuator VF L53 will not present the same travel diagrams and actuating forces as switch FL •53-E11M2V9 (e.g. FL 553-E11M2V9, FL 653-E11M2V9...).
- ⁽³⁾ If installed with switch FL •58-M2 (e.g. FL 558-M2, FL 658-M2...) the actuator could mechanically interfere with the housing of the switch. The interference could happen or not according to the actuator and the head fixing position.
- ⁽⁴⁾ The actuator cannot be rotated to the inside because it will mechanically interfere with the switch head.



Items with code on **green** background are stock items

Accessories See page 225